

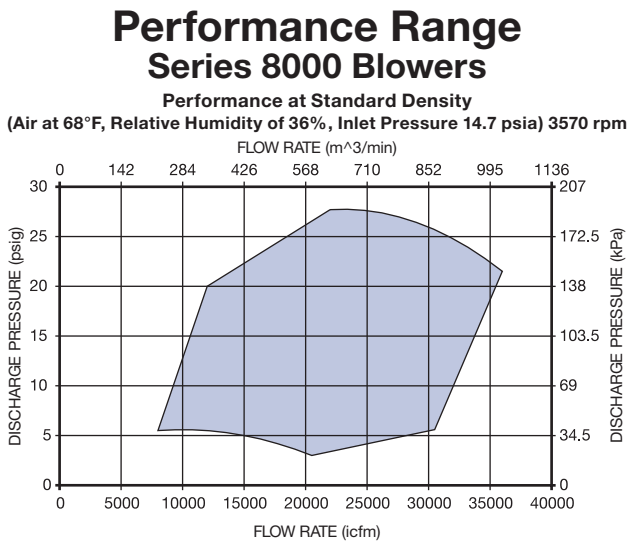


Shown with optional Belly Wrap™ and API machine base.

Power Mizer® Series 8000 Cast Blowers & Exhausters

Rugged, high efficiency multi-stage blowers for heavy-duty applications

Continuing the more than 100-year tradition of Spencer innovation in air and gas handling equipment, the Power Mizer Series 8000 presents a new level of efficiency and performance in multi-stage centrifugal blowers and exhausters. Based on modern engineering concepts and casting technology, these blowers were rigorously tested in the laboratory and in the field to confirm their superior aero-dynamic characteristics and reliability. With their rugged cast components, Series 8000 blowers are suitable for the most severe applications from sulphur recovery and wastewater treatment aeration to felt dewatering in the pulp and paper industry. Corrosion resistant coatings and special materials available.



Materials of Construction

- Casing and Heads: cast iron Class 30
- Tie rods: 1035 steel
- Interstage sealing: silicone rubber
- Shaft: AISI 1144 carbon steel
- Impellers: ASTM A356.0-T6 cast aluminum
- Base: A36 structural steel
- Finish: epoxy primer with urethane topcoat
- Base pads: 1" thick cork and synthetic rubber

Technical Data (For 3570 rpm)

- Number of stages: 1-6 (60 Hz)
- Operating speed: 3570 rpm
- Casing design pressure: 30 psig
- Inlet connection: 24" (610mm) flange
125lb/150lb ANSI drilled and tapped
- Outlet connection: 20" (508mm) flange
125lb/150lb ANSI drilled and tapped
- Seals: labyrinth (carbon ring available)
- Bearings: 6320/6320 ball, minimum L10 bearing life of ten years per AFBMA
- Lubrication: oil
- Drains are 1/2 NPT with plugs
- Impeller diameter: 35 inches
- Impeller tip speed: 545 ft/s
- First critical speed: 4350 rpm
- Vibration: .23 in/sec maximum

Accessories

- Full line of standard and custom electrical control panels for packaged systems-UL and CUL listed available.
- Dissolved oxygen control system
- Flexible sleeve connectors and expansion joints
- Filters and silencers
- Butterfly valves and check valves

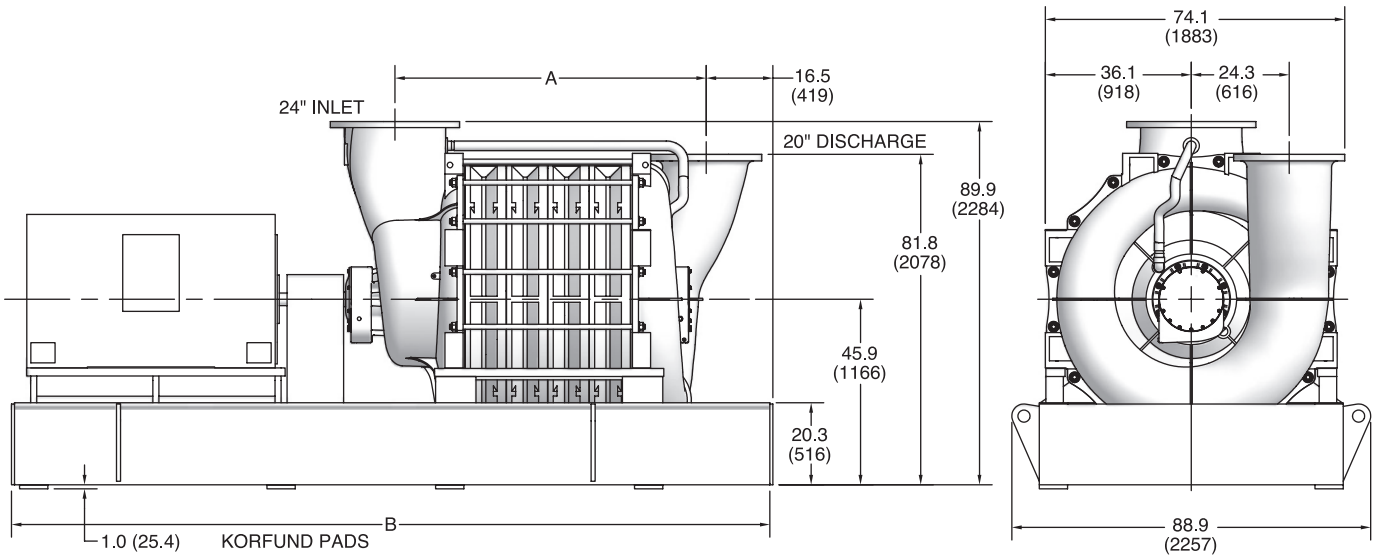
Note: Specifications may vary and change without notice.

Series 8000

Dimensions

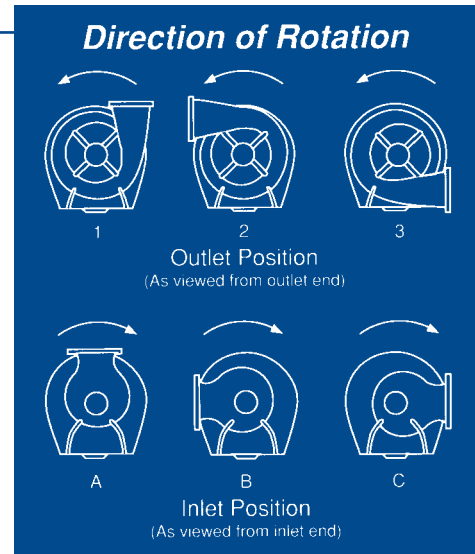
Inches
(mm)

Dimensions are approximate
and intended for reference only.



Model No.	No. of Stages	Dimensions				Weight without motor	
		A		B*			
		inches	mm	inches	mm	lb	kg
C81	1	36.1	917	130	3,302	14,500	6,577
C82	2	46.4	1,177	155	3,937	18,000	8,165
C83	3	56.6	1,438	171	4,343	21,500	9,752
C84	4	66.9	1,698	181	4,597	25,000	11,340
C85	5	77.1	1,958	191	4,851	28,500	12,927
C86	6	87.4	2,219	201	5,105	32,000	14,515

*May vary depending on motor size



Spencer manufactures and markets a complete line of multi-stage centrifugal blowers and exhausters with cast or fabricated construction. For selection assistance, contact your local Spencer representative or The Spencer Turbine Company at marketing@spencer-air.com.

For Customer Approval

Certified Correct

Date: _____

Signed: _____

Customer Name: _____

Customer Order No.: _____

Project Name: _____

Sales Order No.: _____



The **Spencer Turbine Company**, 600 Day Hill Road, Windsor, CT 06095-4706

TEL 800-232-4321 ♦ 860-688-8361 ♦ FAX 860-688-0098 ♦ www.spencerturbine.com