

Spencer® *Technical Data Sheet*

Stationary Unit



Shown with optional HEPA filter.

Mobile Unit



Shown with optional HEPA filter, hose and tools.

Spencer® FastVac® Vacuum Cleaning System

- Serves one or two operators simultaneously
- High-efficiency, two-stage cartridge separator
- Continuous-duty, quiet operation, low maintenance
- Stationary and mobile units available
- Optional HEPA filters available

The Spencer FastVac system is a solution to the need for a compact, cost-effective, one or two operator central vacuum system. This heavy-duty, industrially rated vacuum system is ideal for a variety of general cleaning applications and high velocity dust collection. The system provides continuous-duty and quiet operation, combined with low maintenance and high filtration efficiency.

Standard FastVac units are designed for 60 hertz operation and sea level applications (for 50 hertz or above sea level, contact factory). They are equipped with a Vortex® regenerative vacuum producer, two-stage separator with a cartridge filter and a cam actuated quick-release dirt can. The stationary system is interconnected and mounted on a steel floor stand, ready for installation. A mobile unit mounted on rubber casters is also available.

Typical Users Include:

- | | |
|---------------------------|-------------------------------|
| ■ Clean Rooms | ■ Hospitals |
| ■ Computer Rooms | ■ Stores & Offices |
| ■ Car Washes & Quick Lube | ■ Auto Body & Detailing Shops |
| ■ Medical Offices | ■ Libraries |
| ■ Factories | ■ Health Care Facilities |
| ■ Restaurants | ■ Auto Rental Agencies |

FastVac[®] Vacuum Cleaning System

Product Specifications:

1 Operator System (5HP):

Stationary (350 lb)

- SYS90132B VB-037 (200-230/460)
- SYS90133B VB-037 (575)
- SYS901321B VB-037 (115/230)

Single Phase

1 Operator System (5HP):

Mobile (350 lb)

- SYS90137B VB-037 (200)
- SYS90141B VB-037 (230)
- SYS90142B VB-037 (460)
- SYS90138B VB-037 (575)

2 Operator System (7½HP):

Stationary (450 lb)

- SYS90134B VB-055 (200-230/460)
- SYS90135B VB-055 (575)

2 Operator System (7½HP):

Mobile (450 lb)

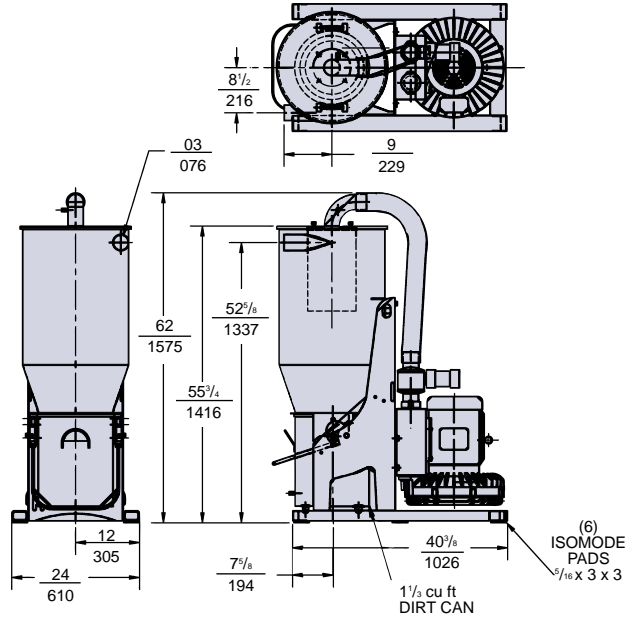
- SYS90139B VB-055 (200)
- SYS90143B VB-055 (230)
- SYS90144B VB-055 (460)
- SYS90140B VB-055 (575)

Vortex vacuum producer with a TEFC, 200-230/460 or 575 volts, 3 phase, 60 hertz motor, vacuum relief valve and diffuser. A 20" diameter cartridge separator with 1½ cu. ft. dirt can, 3" O.D. tube tangential inlet, 3" elbow on outlet, 54 sq. ft. filter area, synthetic/cellulose cartridge, manual clean and spare cartridge. *Note: Mobile units are supplied with a manual NEMA 1 A-T-L starter mounted on the frame and prewired, a 50' power cord (plug not supplied) and inlet valve(s).*

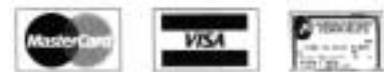
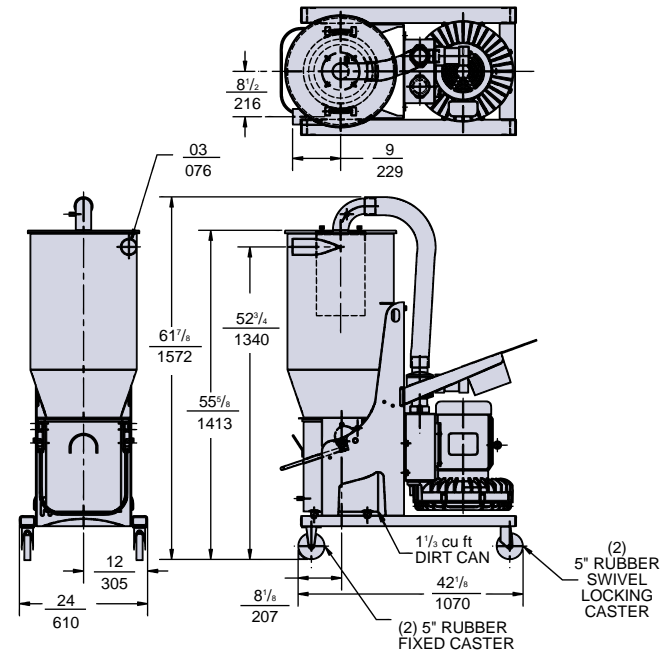
Dimensions Inches (mm)

Dimensions are approximate and intended for reference only.

Stationary Unit




Mobile Unit



MasterCard, Visa and American Express Welcome

Since 1892 moving air and gas for a cleaner environment

The  **Spencer Turbine Company, 600 Day Hill Road, Windsor, CT 06095-4706**

TEL 800-232-4321 ♦ 860-688-8361 ♦ FAX 860-688-0098 ♦ www.spencerturbine.com